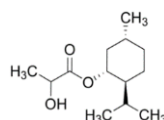


Specifications



Product : MENTHYL LACTATE
Molecular formula : $C_{13}H_{24}O_3$
Molecular weight : 228.33
CAS No. : 59259-38-0
Product Code : 06FI0172

Molecular structure :



TESTS	SPECIFICATIONS
Color and appearance	White crystalline powder.
Assay	NLT 98.0% (By Gas Liquid Chromatography)
Solubility	5% solution in ethanol is clear.
Melting point	38°C - 40°C
Optical rotation (5% solution in Ethanol)	-83.0 to -79.0°
Acid value	NMT 2
Arsenic (As)	NMT 3 ppm
Lead(Pb)	NMT 10 ppm

(NMT= Not more than, NLT=Not less than)

INFORMATION	PREPARED BY	APPROVED BY
Name	Mr. Suchit Mukherjee	Mr. Thomas Varghese
Designation	Q.C Executive	Director Technical
Date	Jan 2019	-
Revision	0	-
Review Date	-	-
Signature		

Disclaimer: The products sold hereunder and any other products sold by Indenta Chemicals (India) Pvt. Ltd. have been subjected to limited testing and it does not release the user from the responsibility of undertaking their own test.

Indenta Chemicals (India) Pvt. Ltd.

Office: 117 The Summit Business Bay, Near WEH Metro Station, Opp. Cinemax Theatre, Off. Andheri Kurla Road, Andheri (E), Mumbai 400 093.
 Phone : +91-22-2684 9600 | Fax : +91-22-2684 9060 | Email: indenta@indenta.com | Website : www.indenta.com

Unit 1: Plot No. 1405, GIDC Sarigam, Dist. Valsad, Gujarat – 396155

Unit 2: Building No. 73, Gala No. 7, Indian Corporation Compound, Village Gundavli, Mankoli Naka, Bhiwandi, Thane - 421302